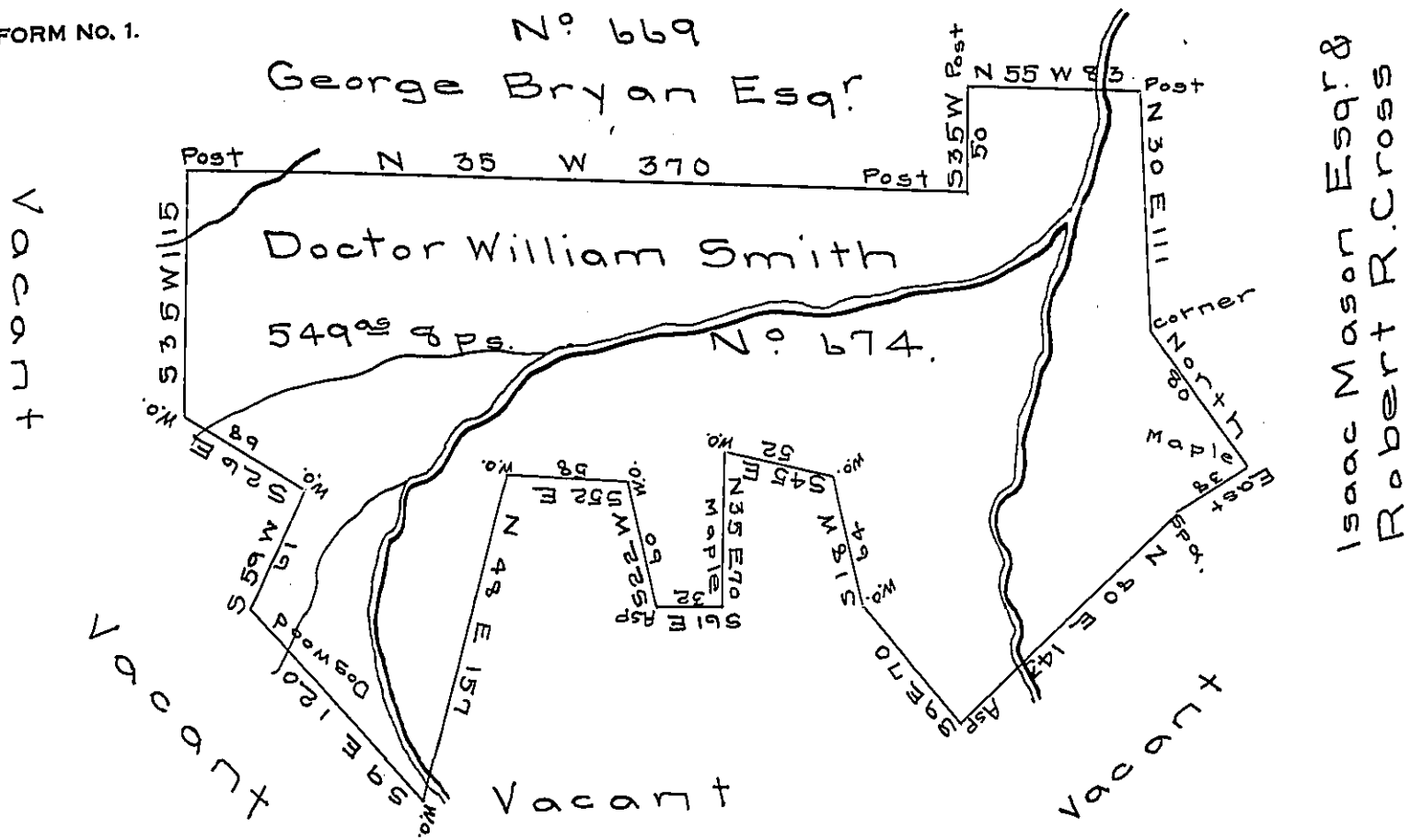


FORM No. 1.



A draught of a tract of land situate on the head Branches of Pine creek adjoining lands of George Bryan Esq. & others in the County of Northumberland within the last purchase made of the Indians containing five hundred and forty nine acres with the usual allowance of six per cent for roads &c. Surveyed for Doct^r William Smith the 2nd day of August 1786 in pursuance of a warrant dated October 20th 1785 N^o 674.

George Woods Jun^r D.S.

To John Lukens Esq. S.G. }

In testimony that the above is a true copy of the original remaining filed in the Deputy Surveyor's office of Armstrong County I have hereunto set my hand this 4th day of April A.D. 1840.

For Isaac Guthrie D.S.
J.E. Meredith

IN TESTIMONY that the above is a copy of the original remaining on file in the Department of Internal Affairs of Pennsylvania, made conformably to an Act of Assembly approved the 16th day of February 1833, I have hereunto set my hand and caused the Seal of said Department to be affixed at Harrisburg, this sixteenth day of April 1907.

Isaac B. Brown
Secretary of Internal Affairs.